

SERIES 4 STREET LIGHTS

96 WATT / 100 WATT

PRODUCT CODES

96STR12-S4

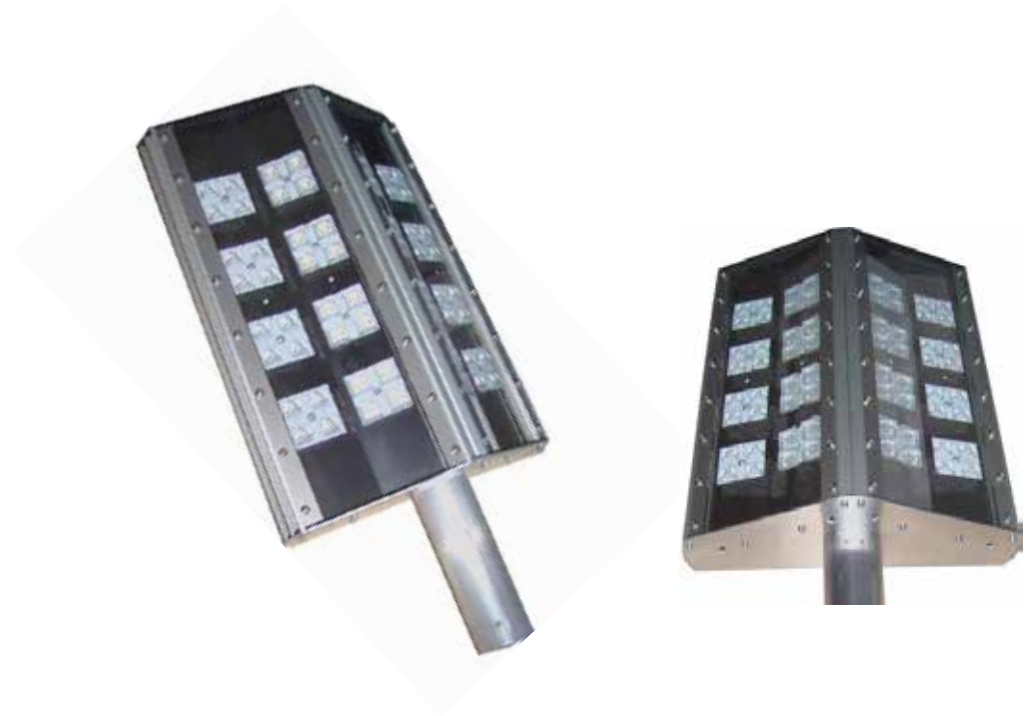
100STR220-DC

PRODUCT DESCRIPTION

96W / 100W LED Street Light CCR series 4 in an array of anodized aluminium extrusions with a clear UV resistant ultra high impact poly-carbonate cover. The LED Street Light is a locally developed OEM design to replace the 200W S3 COB LED lights and a good substitute for the conventional 400W metal halide flood light awarding the user with up to 75% energy cost savings and extended lifetime benefits. New CCR driverless technology eliminating the need for third party drivers. There is 100% output the moment the light is switched on, no warm-up or strike delays.

Mounting: Spigot entry 38-44mm Pipe
Surge and Lightning Protection Replaceable Fuse

- **5 YEAR GUARANTEE**
- **LOCALLY MANUFACTURED**
- **SABS TESTING IN PROGRESS**



SPECIFICATION SUMMARY

Rated Power:	96W (12VDC) 100W (110VAC / 220VAC)
Light output:	6937lm (96W) / 9402lm (100W)
Colour:	Warm White or Neutral White or Cool White
LED Technology:	Seoul LED
IP Rating:	IP65
Rated Lifetime:	> 80 000 HRS
Beam Angle:	60°vertical x 170°horizontal
Weight:	5 Kg
Dimensions:	400mm x 300mm x 105mm

